

Εργαστηριακές Ασκήσεις Γενικής Φυτοπαθολογίας  
5ο Εξάμηνο

# ΑΔΗΛΟΜΥΚΗΤΕΣ HYPHOMYCETES

**ΓΕΩΠΟΝΙΚΟ ΠΑΝΕΠΙΣΤΗΜΙΟ ΑΘΗΝΩΝ**  
**Τμήμα Επιστήμης Φυτικής Παραγωγής**  
**Εργαστήριο Φυτοπαθολογίας**

# Ταξινόμηση Αδηλομυκήτων

## 1. Κλάση: HYPHOMYCETES

- Σχηματίζουν σπόρια σε ελεύθερους κονιδιοφόρους ή σε κονιδιοφόρους που σχηματίζουν συννήματα ή σποριοδόχεια π.χ. *Verticillium dahliae*, *Alternaria solani*

## 2. Κλάση: COELOMYCETES

- Σχηματίζουν σπόρια σε πυκνίδια π.χ. *Phoma tracheiphila* ή ακέρβουλα π.χ. *Marssonina juglandis*

## 3. Κλάση: AGONOMYCETES ή MYCELIA STERILIA

- Δεν σχηματίζουν σπόρια αλλά μυκηλιακές κατασκευές όπως σκληρώτια π.χ. *Rhizoctonia solani*, *Sclerotium rolfsii*.

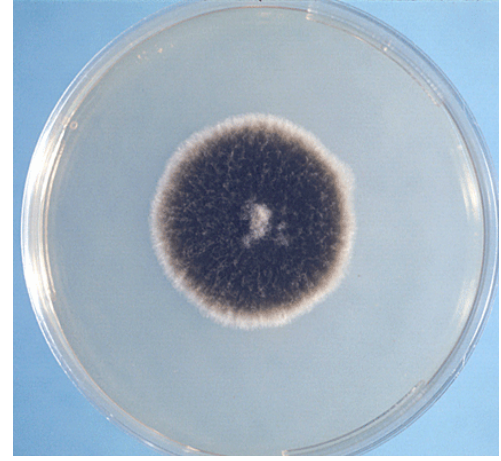
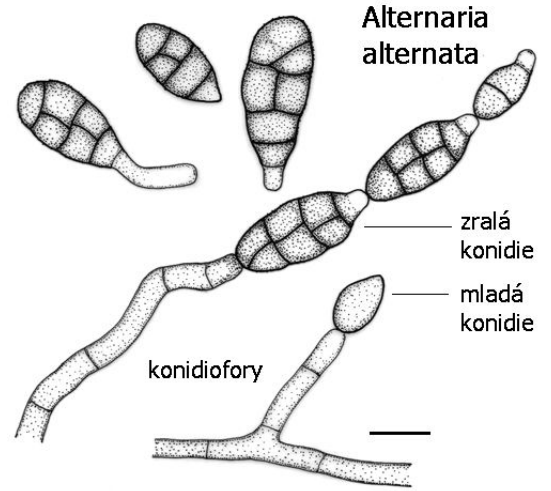
# *Alternaria* spp.



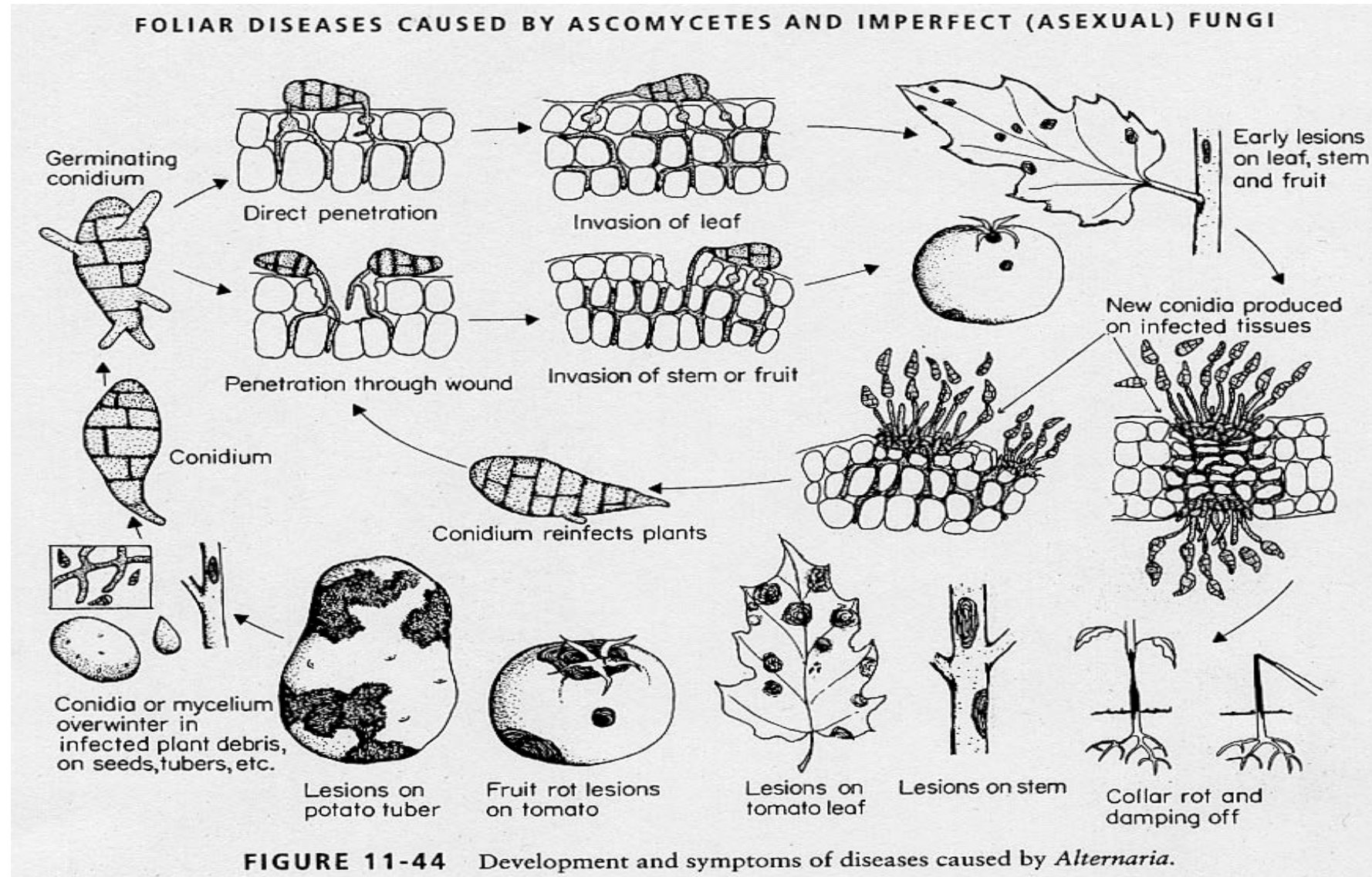
*Alternaria sp.*



# Alternaria sp.

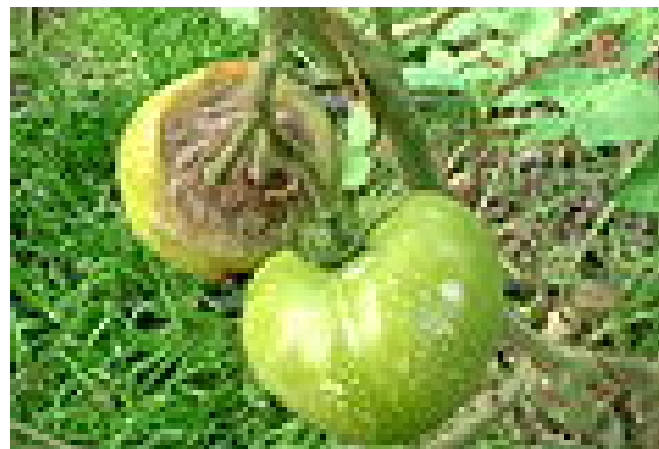
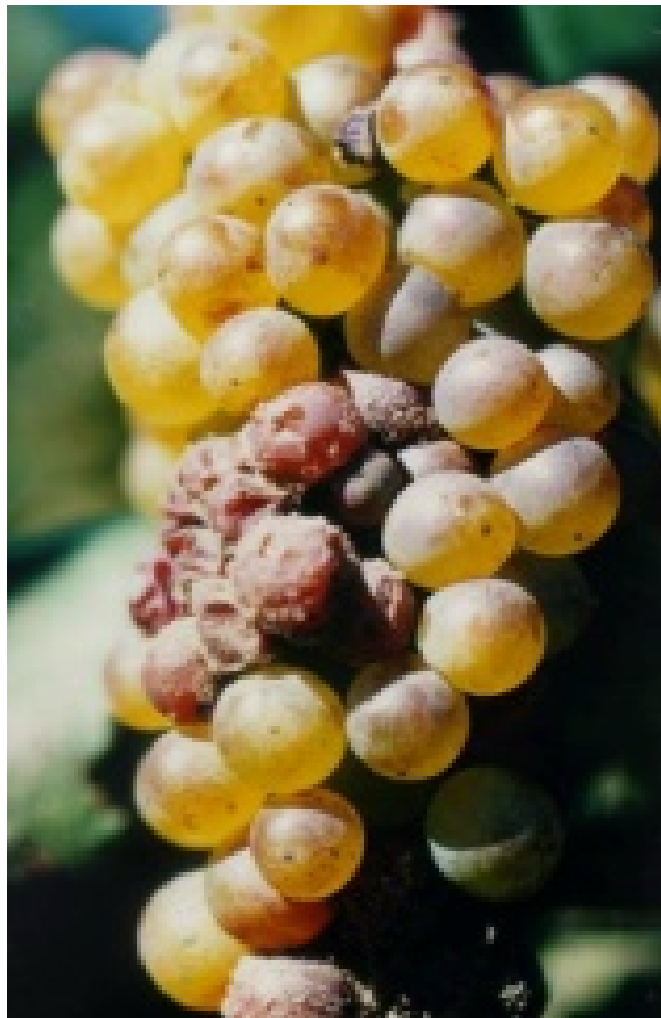


# Alternaria solani



**FIGURE 11-44** Development and symptoms of diseases caused by *Alternaria*.

# *Botrytis cinerea*



## *Botrytis cinerea*

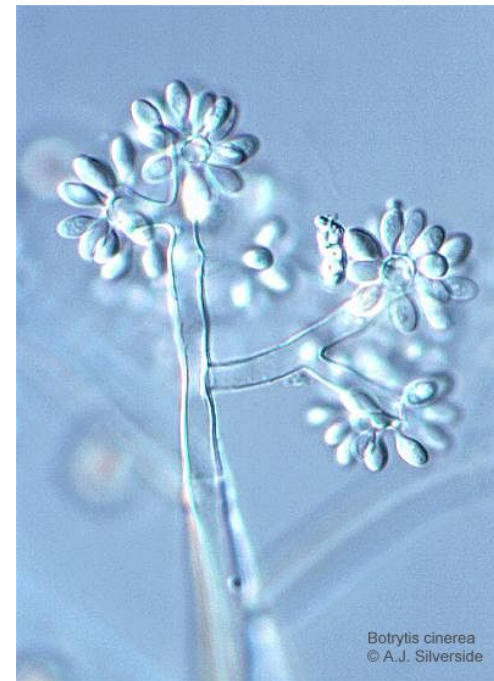




*Botrytis cinerea*



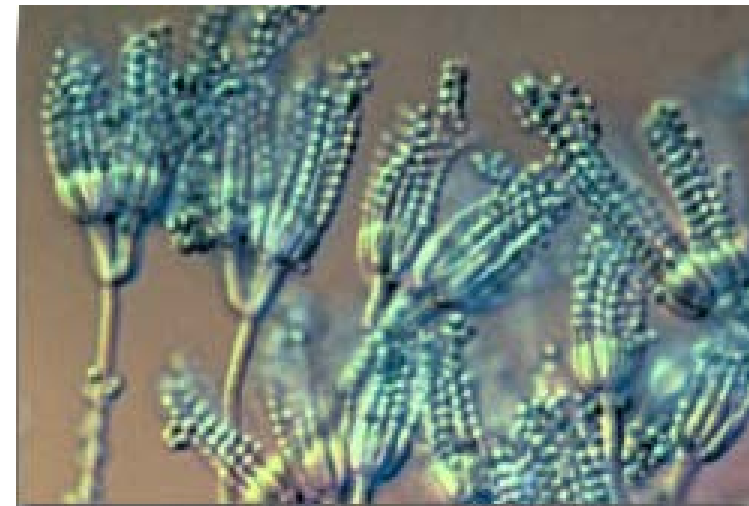
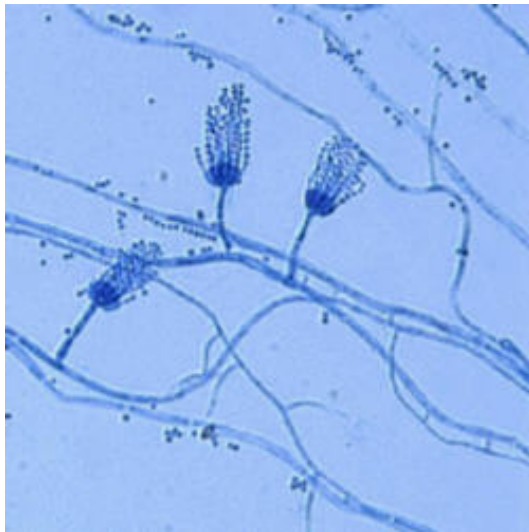
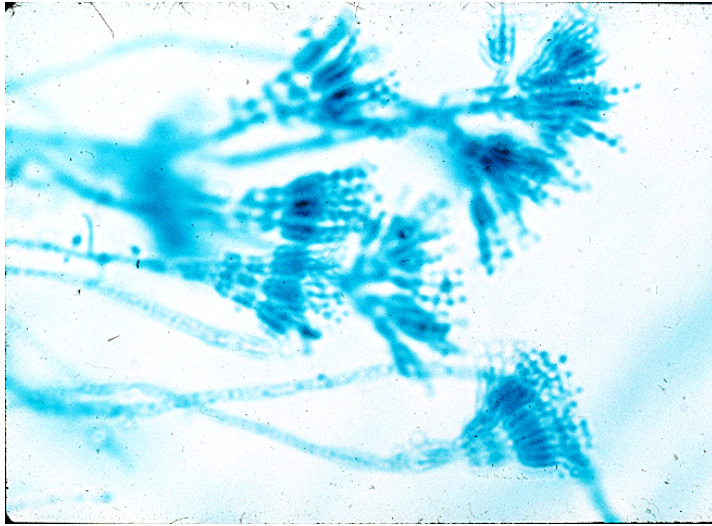
# *Botrytis cinerea*



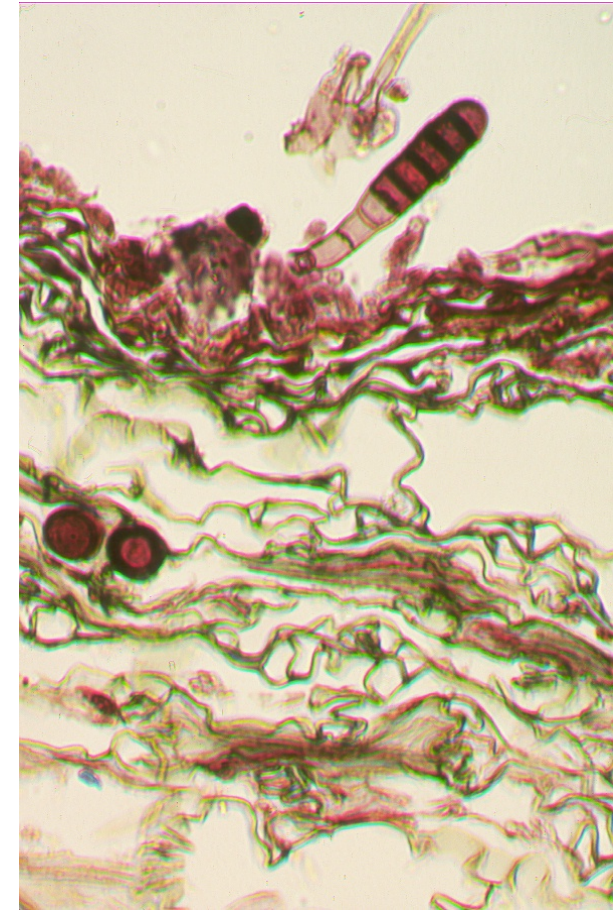
# *Penicillium* spp.



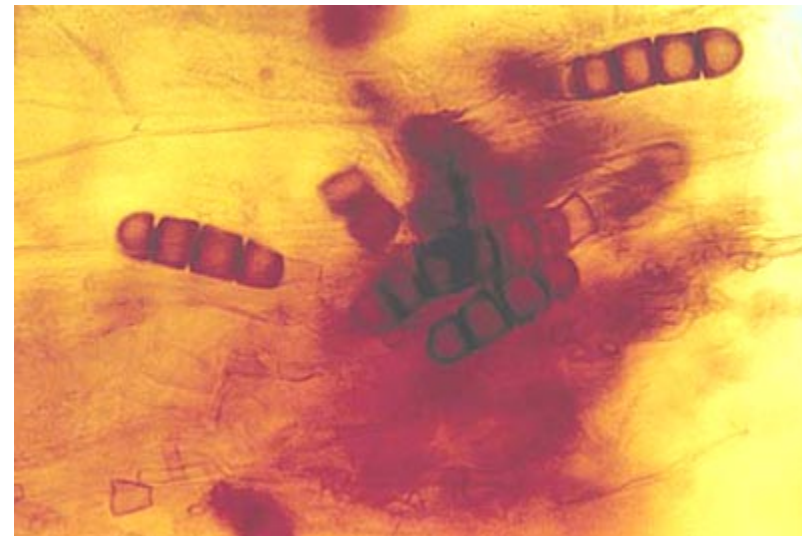
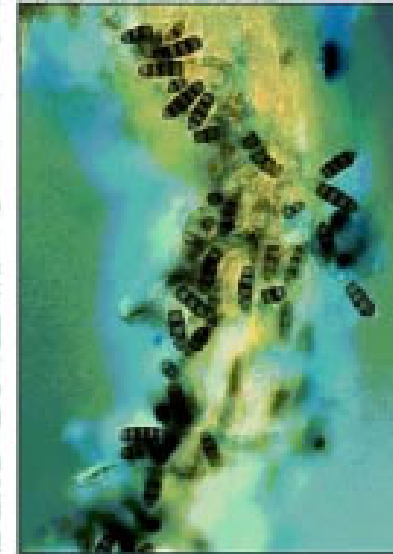
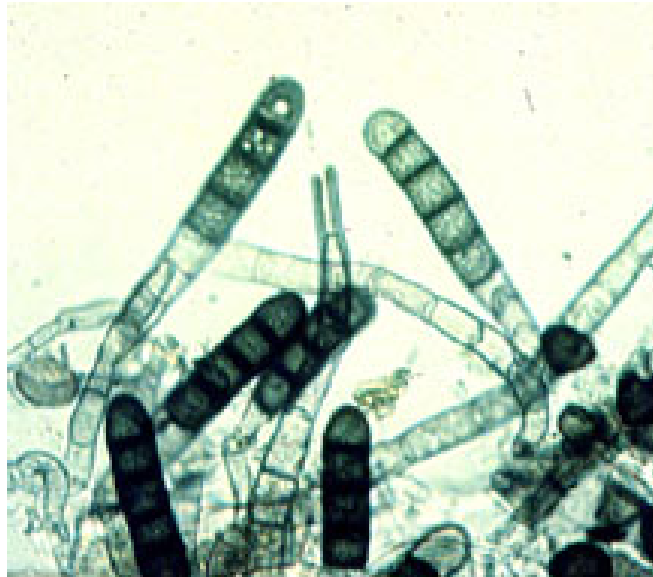
# *Penicillium* spp.



# *Thielaviopsis basicola*



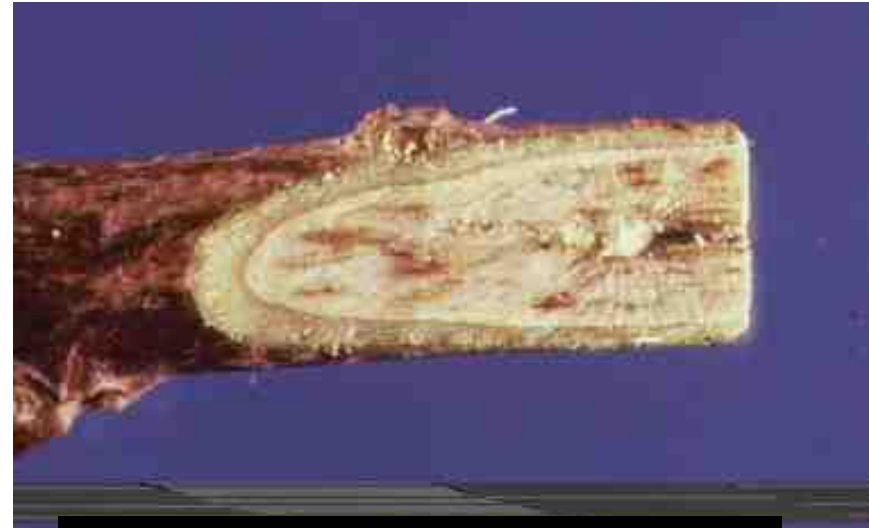
# *Thielaviopsis basicola*



# Αδρομύκωση - *Verticillium dahliae*

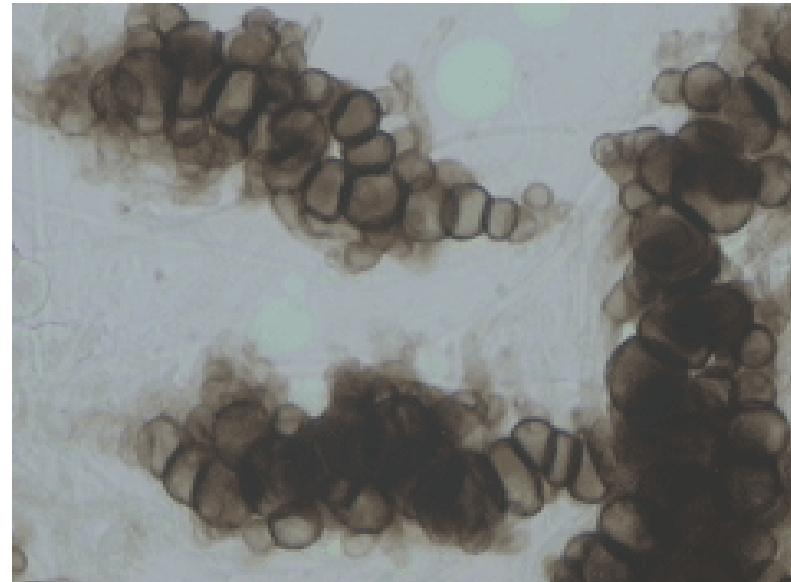
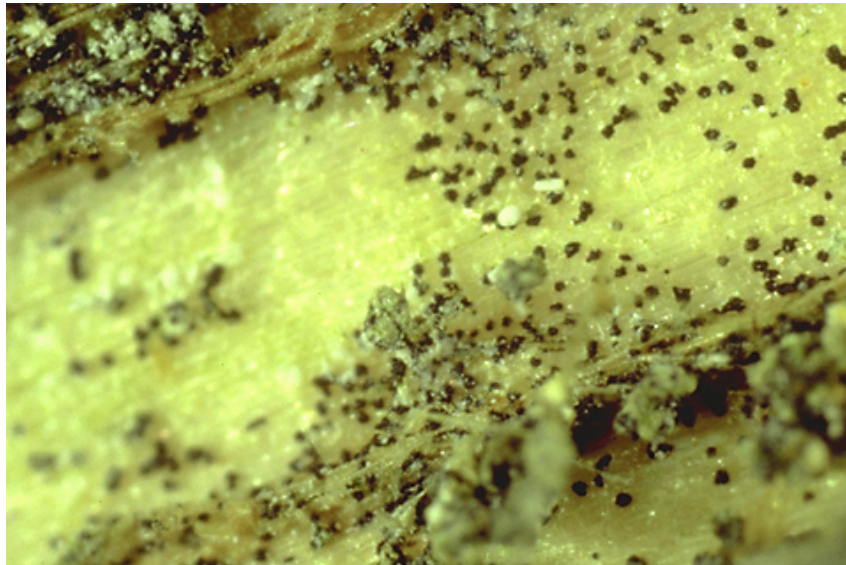
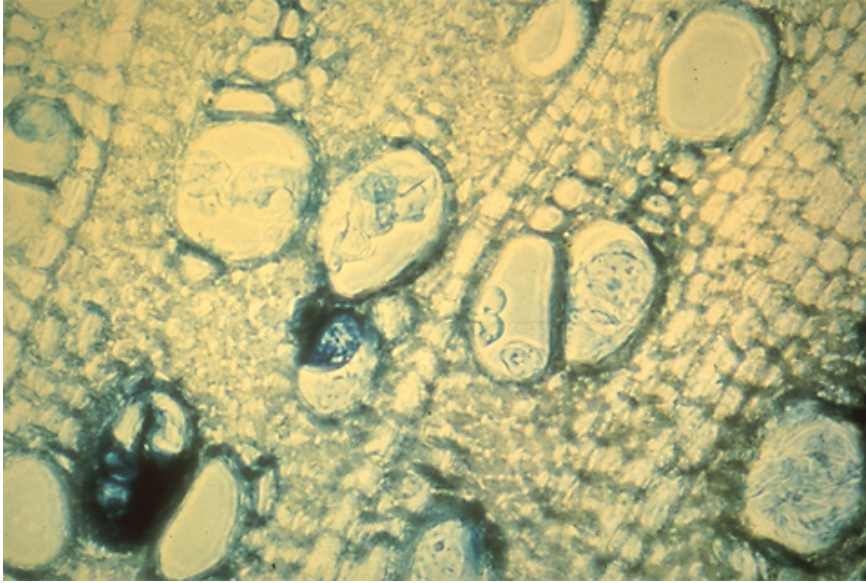


## *Verticillium dahliae*

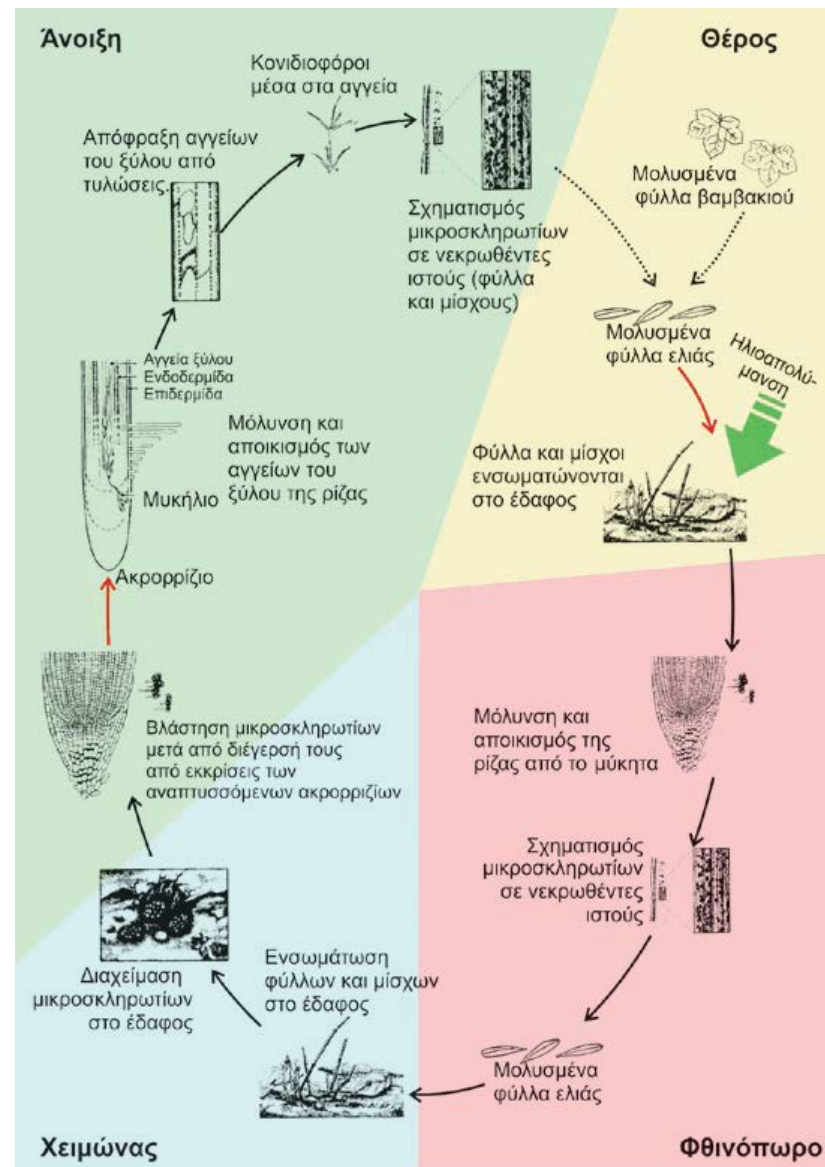




*Verticillium dahliae*

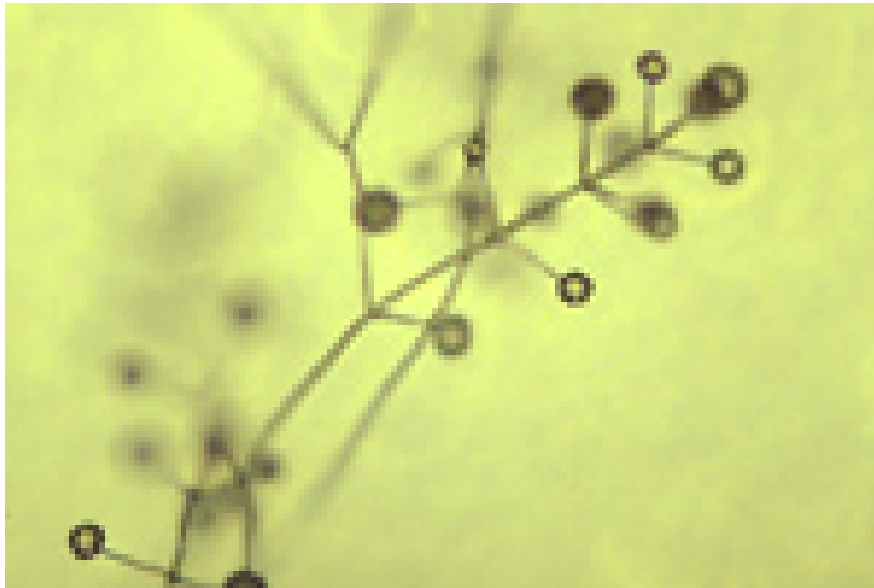


# Verticillium dahliae



- Στάδιο μόλυνσεως
- Ενδοφυτική ανάπτυξη
- Παρουσία του παθογόνου εκτός του φυτού

## *Verticillium dahliae*



# *Fusarium* sp.



# *Fusarium* sp.



# *Fusarium* sp.

